

# IR4

INFRARED DETECTOR



## Infrared Detector for Concentration and Composition measurement in Polyolefins.

IR4 is a dual wavelength stand-alone infrared detector, which uses the principle of infrared absorption spectroscopy to measure the concentration and composition in polyolefins.

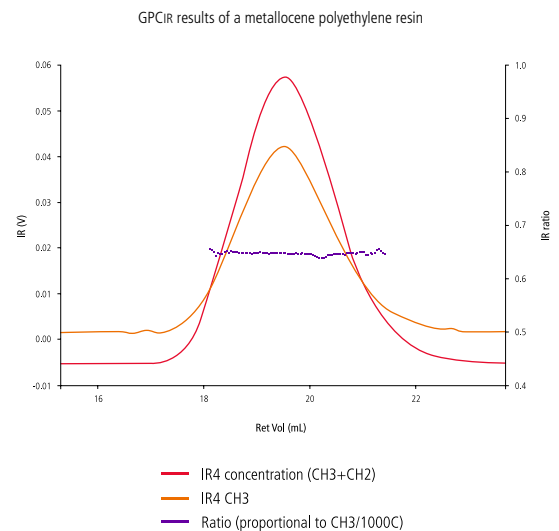
IR4 is designed for on-line concentration and composition determination in HPLC, GPC or coupled to other separation techniques like CRYSTAF, TREF, etc., and it has been showed as the most appropriate detector for polyolefins.

It consists of two modules: Spectroscopic unit and Control unit. Spectroscopic module hosts the flow through cell and sensors. This unit must be connected in line with the analytical system. Control unit has a microprocessor to manage the whole device and the signals acquisition.

When adding a composition or a carbonyls sensor, other useful information can be obtained in addition to the concentration. Thanks to this capability, IR4 can be used for applications in High Temperature GPC analysis like ethylene percent contents in EP rubber, EVA and EEA copolymers, etc.

## KEY POINTS

- ▶ Concentration and composition measurement in liquid separation techniques like GPC, TREF, CRYSTAF, HPLC, etc.
- ▶ Outstanding baseline stability.
- ▶ No need of long stabilization time.
- ▶ Heated flow through cell and transfer line.
- ▶ No need of external utilities/gases.



## The broadest range of instruments for Polyolefin Characterization.

- **CRYSTAF:** an instrument designed for intensive use in the analysis of the Chemical Composition Distribution in Polyolefins.
- **TREF:** a completely automated apparatus for the analysis of the Chemical Composition Distribution in Polyolefins by TREF. It provides complementary information to CRYSTAF data in the analysis of some complex resins.
- **CRYSTAF-TREF:** CRYSTAF and TREF techniques are available in the same equipment for a full Chemical Composition Distribution characterization.
- **CRYSTAF QC:** a simple and robust apparatus for the precise and fast analysis of the Chemical Composition Distribution in a Quality Control environment.
- **CEF:** a high throughput equipment to analyze the Chemical Composition Distribution in polyolefins, using a new approach which combines CRYSTAF and TREF separation mechanisms.
- **CFC:** a fully automated Cross Fractionation Chromatograph (TREF+GPC) for the analysis of the Bivariate distribution in Polyolefins.
- **CRYSTEX:** an apparatus specially designed for the analysis of Xylene Solubles in polypropylene in a Quality Control environment with no solvents handling.
- **GPC<sub>IR</sub>:** a new High Temperature GPC for the analysis of MWD in Polyolefins. Fully automated sample preparation and filtration. Triple detector+composition.
- **GPC One Software:** the most comprehensive GPC Calculations Software available in the market integrating all detectors signals in the same package.
- **Data Unit 200:** Versatile signals acquisition device to link any vendor GPC instrument with Polymer Char's GPC acquisition and calculations unit.
- **PREP mc<sup>2</sup>:** an automated instrument to perform semipreparative fractionation of polymers according to composition or molar mass.
- **IR4:** a reliable IR detector that can work with up to four simultaneous wavelengths to measure concentration and composition.
- **IR5 MCT:** a modern IR detector with a sensitive MCT element (thermoelectrically cooled) for the analysis of low number of branches in HDPE pipe resins by GPC<sub>IR</sub>.
- **Additional Detectors:** in some of its instruments Polymer Char offers Light Scattering (DAWN<sup>®</sup> HELEOS<sup>™</sup> II of Wyatt Technology), Viscometry and Composition (by Polymer Char) to perform Triple Detector+Composition analysis.

### Company Profile

Polymer Char, the world's leading Polyolefin Characterization Company, is devoted to the development of state-of-the-art instrumentation for Polyolefin Analysis.

Polymer Char goes as far as Polyolefin Analysis techniques and Engineering Technology and advancement is concerned, with the broadest and most modern range of products for Polymer Analysis and more specifically, for Structural Characterization of Polyolefins, such as Chemical Composition Distribution (CCD), Molar Mass Distribution (GPC/SEC), Bivariate Distribution, Xylene Solubles, Preparative Fractionation or Infrared Detection.

The company is well known also by its advanced approach into virtual instrumentation software, that together with excellent Remote Control capabilities and its strong commitment to Customer success, places the company in the leading edge on instrumentation Diagnostics and Technical Support.

Polymer Char was formed as Polymer Characterization, S.A. in 1992 at the Valencia Technology Park in Spain with the initial goal to develop a commercial CRYSTAF instrument. Now, after almost two decades in the Polyolefin Characterization industry, backed with unmatched technical expertise and insights, Polymer Char maintains the highest levels of Quality and Service that go with the needs of the Petrochemical, Research and Academic industries.

Today, Polymer Char provides to the leading Petrochemical firms, as well as to prestigious R&D Institutes and Universities from all around the world. Its instruments are present in over 20 countries, within the Americas, Europe, Africa, Middle East and Asia.

Polymer Char's knowledge investments are backed by years of R&D and have led to the creation of state-of-the-art Polyolefin lab in Valencia in 2008 from where the company supplies Analytical Services in over 30 countries.



IMPIVA



EUROPEAN UNION  
European Regional  
Development Funds